

Admiralty Leisure Folio
SC5610 The Firth of Clyde

The Notices to Mariners (NMs) listed below apply to the latest edition of SC5610 (3rd Edition) published on 23rd October 2008.

L5703/08 SCOTLAND — Firth of Clyde — Dunoon Bank — Buoy.

Source: Clydeport Estuary Control

Chart: SC5610-2 ETRS89 DATUM

Delete  *Fl(5)Y.20s* 55° 56' .83N. , 4° 54' .25W.

L5941/08 SCOTLAND — Firth of Clyde — Isle of Arran — Lamalash Harbour — North Channel — Restricted area.

Source: The Scottish Government Statutory Instruments 317/08

Chart: SC5610-13 ETRS89 DATUM



Insert limit of restricted area, , joining: 55° 32' .60N. , 5° 06' .51W. (shore)
55° 31' .56N. , 5° 05' .22W. (shore)
and
55° 31' .88N. , 5° 04' .30W. (shore)
55° 33' .00N. , 5° 04' .82W.
55° 33' .00N. , 5° 04' .96W. (shore)

Chart: SC5610-17 ETRS89 DATUM

Insert limit of restricted area, , joining: 55° 32' .60N. , 5° 06' .51W. (shore)
55° 31' .56N. , 5° 05' .22W. (shore)
and
55° 31' .88N. , 5° 04' .30W. (shore)
55° 33' .00N. , 5° 04' .82W. (islet)

Chart: SC5610-19 ETRS89 DATUM

Insert limit of restricted area, , joining: 55° 32' .60N. , 5° 06' .51W. (shore)
55° 31' .56N. , 5° 05' .22W. (shore)
and
55° 31' .88N. , 5° 04' .30W. (shore)
55° 33' .00N. , 5° 04' .82W. (islet)

L6593/08 SCOTLAND — West Coast — Campbeltown — Legends. Landmark.

Source: Argyll and Bute Council

Chart: SC5610-12 (plan B, Campbeltown Loch) ETRS89 DATUM


Amend legend to, TV Mast 251·3°, centred on: 55° 25' ·434N. , 5° 34' ·260W.
legend to, TV MAST (51) 1440m beyond W limit of
chart, centred on: 55° 25' ·030N. , 5° 36' ·160W.
Delete  (49) (a) 55° 25' ·068N. , 5° 36' ·200W.
legend, Sch, close SE of: (a) above

Chart: SC5610·14 (plan A, Kildonald Point to Ailsa Craig) ETRS89 DATUM

Delete  (49) 55° 25' ·07N. , 5° 36' ·20W.

**L6650/08 SCOTLAND — West Coast — Firth of Clyde — Gourock —
Kempock Point — Light.**

Source: Clydeport Notice 56/08

**Chart: SC5610·2 (plan A, Southern Approaches to Loch Long including Holy
Loch) ETRS89 DATUM**

Amend light to, Fl.G.6s11m3M 55° 57' ·77N. , 4° 49' ·05W.

**L873/09 IRELAND — North East Coast — Approaches to Larne — Pilot
boarding place. Radio reporting points.**

Source: Port of Larne

Chart: SC5610·17 ETRS89 DATUM

Move , from: 54° 51' ·83N. , 5° 47' ·68W.
to: 54° 52' ·15N. , 5° 47' ·68W.

**L1130/09 SCOTLAND — West Coast — Firth of Clyde — Upper Loch Fyne —
Rughan Caoirich North-north-eastwards — Marine farm.**

Source: The Scottish Government

Chart: SC5610·10 (plan A, Loch Fyne) ETRS89 DATUM

Insert  56° 04' ·85N. , 5° 17' ·19W.

**L1200/09 SCOTLAND — West Coast — Loch Ryan — Jamieson's Point
Eastwards — Buoy.**

Source: Northern Lighthouse Board Notice 7/09

Chart: SC5610·16 ETRS89 DATUM

Insert  *ISO.4s* 54° 59' ·77N. , 5° 03' ·82W.

Chart: SC5610·18 (plan A, Loch Ryan) ETRS89 DATUM

Insert  *ISO.4s* 54° 59' ·77N. , 5° 03' ·82W.

L1260/09 SCOTLAND — Firth of Clyde — Firth of Clyde Channel — Warden Bank North-westwards — Wreck.

Source: Clydeport Notices 18-19/09

Chart: SC5610-2 (plan A, Southern Approaches to Loch Long including Holy Loch) ETRS89 DATUM

Insert  *Wk* 55° 55' .84N. , 4° 54' .98W.

Chart: SC5610-19 ETRS89 DATUM

Insert  *Wk* 55° 55' .84N. , 4° 54' .98W.

L1279(T)/09 SCOTLAND — West Coast — Firth of Clyde — Dunoon Bank — Data buoy.

Source: Clydeport Notice 17/09

1. A yellow data collection buoy, *Fl.Y.5s*, has been established in position 55° 56' .70N. , 4° 54' .24W. (ETRS89 Datum).

Charts affected: SC1907, SC1994, SC5610-2A, SC5906-19B

L1490/09 SCOTLAND — West Coast — Firth of Clyde — Lower Loch Fyne — East Loch Tarbert — Dredged area. Berths. Pontoons. Quay. Depths.

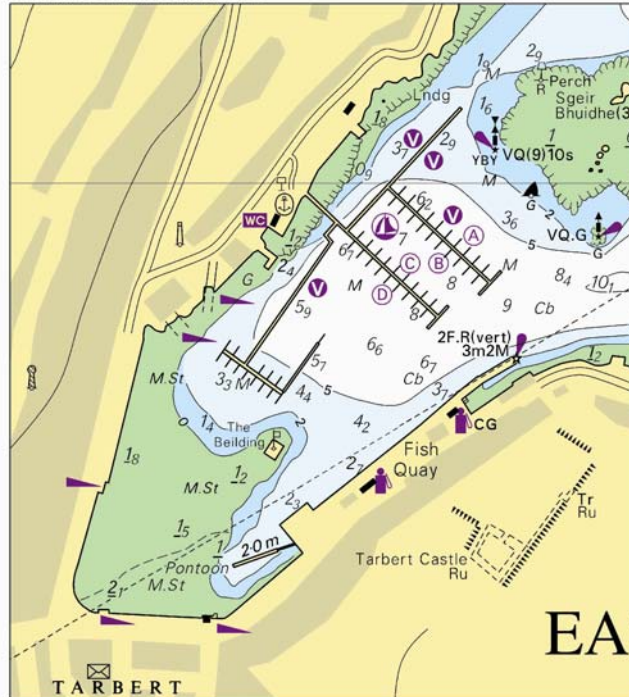
Source: Tarbert (Loch Fyne) Harbour Authority

Chart: SC5610-12 (plan D, East Loch Tarbert) ETRS89 DATUM

Insert the accompanying block, showing new dredged area,
berths and amendments to pontoons, quay and
depths, centred on: 55° 51' .92N. , 5° 24' .71W.

Substitute depth $\mathcal{3}_s$ enclosed by 5m contour for depth $\mathcal{5}_s$ 55° 51' .940N. , 5° 23' .828W.

Block for SC5610-12D LNM1490/09



L2190/09 SCOTLAND — Firth of Clyde — Isle of Bute — Rothesay Bay — Spoil ground.

Source: Clydeport Operations Limited

Chart: SC5610-5 ETRS89 DATUM

Insert circular limit of spoil ground, radius 1.35 cables, centred on: 55° 51' .00N. , 5° 03' .00W.

Chart: SC5610-6 (plan A, Rothesay Bay) ETRS89 DATUM

Insert circular limit of spoil ground, radius 1.35 cables, centred on: 55° 51' .00N. , 5° 03' .00W.

Chart: SC5610-7 (plan A, Rothesay to Largs) ETRS89 DATUM

Insert circular limit (southern sector only to N limit of chart) of spoil ground, radius 1.35 cables, centred on: 55° 51' .00N. , 5° 03' .00W.

L2208/09 IRELAND — East Coast — Bangor Bay — North Breakwater — Light.

Source: Quay Marinas Limited



Chart: SC5610-17 ETRS89 DATUM

Amend range of light to, 9M 54° 40' .0N. , 5° 40' .3W.

L2621/09 SCOTLAND — Firth of Clyde — Lower Loch Fyne — East Loch Tarbert — Sgeir Bhuidhe South-westwards — Buoy. Light-beacon.

Source: Northern Lighthouse Board

Chart: SC5610-12 (plan D, East Loch Tarbert) ETRS89 DATUM

Insert	 VQ(9)10s	(a) 55° 52' ·02N. , 5° 24' ·58W.
Delete	 VQ(9)10s, close SE of:	(a) above

L3490/09 IRELAND — North Coast — Portrush, The Skerries Southwards and Southeastwards, Sheep Island Southwards, Ballycastle, Rathlin Harbour, Rathlin Island Westwards — Depths. Legend.

Source: British Government Surveys

Chart: SC5610·17 ETRS89 DATUM

Insert	depth 31 enclosed by 50m contour	(a) 55° 16' ·23N. , 6° 06' ·47W.
Delete	depth 35 enclosed by 50m contour, adjacent to:	(a) above

L3736/09 SCOTLAND — Firth of Clyde — Approaches to Gareloch — Helensburgh Pier Southwards — Depths.

Source: Argyll & Bute Council

Chart: SC5610·3 (plan A, Cartsdyke to Helensburgh) ETRS89 DATUM

Insert	depth 1 ₇ enclosed by 2m contour	(a) 55° 59' ·973N. , 4° 44' ·280W.
Delete	depth 1 ₉ , enclosed by 2m contour, close N of:	(a) above
	depth 2 ₄ , close S of:	(a) above

L3743/09 SCOTLAND — West Coast — Loch Ryan — Stranraer — Marina. Breakwater. Dredged area. Buoyage. Depths. Works. Light.

Source: Dumfries and Galloway Council

Chart: SC5610·18 (plan A, Loch Ryan) ETRS89 DATUM

Delete	 2FG(vert)	54° 54' ·51N. , 5° 01' ·75W.
--------	---	------------------------------

Chart: SC5610·18 (plan B, Stranraer) ETRS89 DATUM

Insert	the accompanying block, showing new marina, breakwater and amendments to dredged area, buoyage, depths and works, centred on:	54° 54' ·48N. , 5° 01' ·72W.
--------	---	------------------------------



L3836/09 SCOTLAND — West Coast — Approaches to the Firth of Clyde — Sanda Island Eastwards — Paterson's Rock — Beacon.

Source: Northern Lighthouse Board

Chart: SC5610-14 (plan A, Kildonald Point to Ailsa Craig) ETRS89 DATUM

Delete  55° 17' .02N. , 5° 32' .53W.

Chart: SC5610-14 (plan B, Sanda Island) ETRS89 DATUM

Delete  55° 17' .02N. , 5° 32' .53W.

L4299/09 SCOTLAND — West Coast — Firth of Clyde — Loch Striven — Legend. Cautionary note.

Source: Clydeport Operations Limited

Chart: SC5610-8 (plan A, Kyles of Bute) ETRS89 DATUM

Insert legend, *Anchorage* (see Note), centred on: 55° 56' .00N. , 5° 04' .08W.

the accompanying note, **LOCH STRIVEN -**

ANCHORAGES, centred on: 55° 54' .48N. , 5° 05' .32W.

LOCH STRIVEN - ANCHORAGES
 The upper parts of the loch are periodically used for the laying up of large vessels which may be anchored in rafts of up to six, bow to stern, with numerous anchors deployed. For further details, see Admiralty Sailing Directions and Clydeport Notice to Mariners.

L5000/09 SCOTLAND — West Coast — Loch Goil — Mooring buoy.

Source: Briggs Marine Contractors Ltd

Chart: SC5610-1 (plan A, Loch Goil and Loch Long) ETRS89 DATUM

Insert  56° 09' .736N. , 4° 54' .492W.

L5911/09 SCOTLAND — Firth of Clyde — Lower Loch Fyne — The Narrows — Otter Spit South-westwards — Depths.

Source: Clydeport Operations Limited

Chart: SC5610-10 (plan A, Loch Fyne) ETRS89 DATUM

Insert depth 13₄ (a) 56° 00' ·27N. , 5° 21' ·26W.
Delete depth 17₁, adjacent to: (a) above

L6085/09 SCOTLAND — West Coast — Kyles of Bute — Burnt Islands — Depths. Drying height.

Source: Clydeport Operations Ltd

Chart: SC5610-6 (plan B, Burnt Islands) ETRS89 DATUM

Insert depth 3₄ (a) 55° 55' ·575N. , 5° 10' ·694W.
depth 2₃ and extend 5m contour N to enclose (b) 55° 55' ·431N. , 5° 10' ·430W.
depth 0₃ 55° 55' ·781N. , 5° 10' ·501W.
drying height 0₇ enclosed by low water line 55° 55' ·775N. , 5° 10' ·540W.
depth 0₅ and extend 2m contour E to enclose (c) 55° 55' ·751N. , 5° 10' ·450W.
Delete depth 4₃, adjacent to: (a) above
depth 2₉, adjacent to: (b) above
depth 1₂, close W of: (c) above

Chart: SC5610-8 (plan A, Kyles of Bute) ETRS89 DATUM

Insert depth 2₃ 55° 55' ·43N. , 5° 10' ·43W.
Substitute depth 2₃ enclosed by 5m contour for depth 3 and associated 5m contour 55° 55' ·69N. , 5° 10' ·87W.
depth 0₃ for depth 0₇ 55° 55' ·78N. , 5° 10' ·50W.

L6913/09 SCOTLAND — Firth of Clyde — Inchmarnock Water — Port a'Chruidh — Light. Landmark.

Source: Northern Lighthouse Board

Chart: SC5610-11 ETRS89 DATUM

Delete ★ Iso.R.10M & Oc(2)Y.24M (occas) 55° 46' ·71N. , 5° 19' ·06W.

Chart: SC5610-19 ETRS89 DATUM

Delete ★ Iso.R.10M & Oc(2)Y.24M (occas) 55° 46' ·71N. , 5° 19' ·06W.

L719/10 SCOTLAND — Firth of Clyde — Greenock Northwards — Anchorage A5 — Foul.

Source: fpv *Minna*

Chart: SC5610-3 (plan A, Cartsyke to Helensburgh) ETRS89

Insert # 55° 58' ·41N. , 4° 45' ·79W.

Chart: SC5610·2 (plan, A, Southern Approaches to Loch Long) ETRS89 DATUM

Insert



Fl.Y.5s

55° 56' ·70N. , 4° 54' ·24W.
